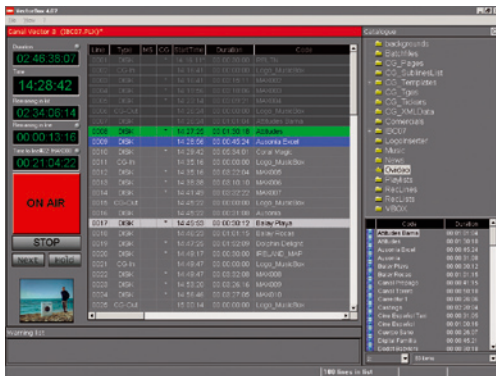


Interactive & Jukebox TV Playout

VECTORBOX Tatamia

- Complete interactive TV solution
- SMS chat & voting, MMS & e-mail
- Automatic graphics & titling
- Automation & video server



VECTORBOX playout interface



Graphic output

VECTORBOX Tatamia is a fully integrated, playout system for interactive TV applications, including SMS, TV-chat and Music Jukebox channels, and is designed to earn maximum revenue by combining real-time audience interactivity via SMS premium messaging with 24/7 video playout and fully automatic graphics overlay including titling, tickers and Flash animations.

VECTORBOX Tatamia is delivered as an end-to-end solution with built-in video server, automation and graphics, which we interface directly to your telecom gateway for the fastest possible time to air. An advanced feature set includes jukebox clip selection and polls, SMS chat filtering with moderating control tools, simulated messages and traffic statistics. The VECTORBOX built-in playout automation allows you to incorporate live feeds, as well as content from VTR and satellite, with easy to create graphics for an individual on-air look and dynamic channel branding. Ingest of new clips is fully automatic and can be from VTR or any other SDI source, or directly from DVD.

OTHER VECTORBOX PRODUCTS

VECTORBOX

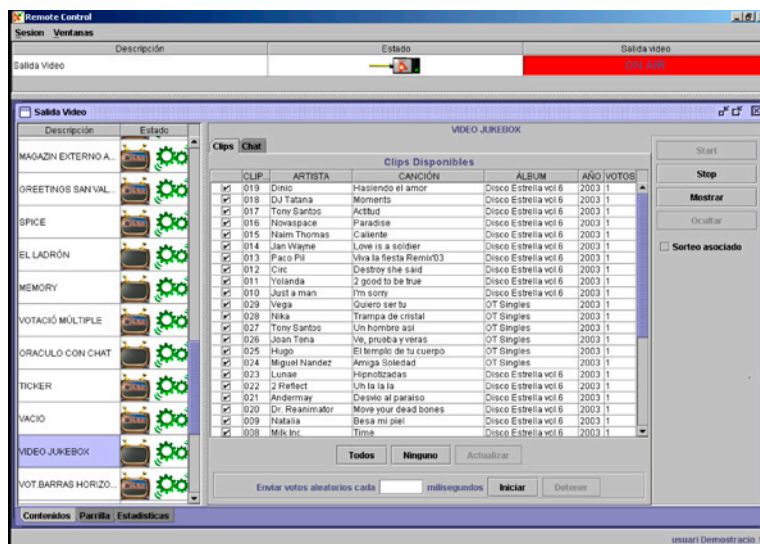
MCR playout automation with built in video server and graphics

V-BOX News

News, studio and production playout

VECTORBOX Tatamia Features

- Combine premium SMS, MMS or e-mail for real-time chat, voting and quiz
- Dynamic 32-bit graphic branding, including Flash animations, logos, titling, tickers and scrolls, over content from any source
- XML and RSS file support for importing ticker text, metadata and playlists
- Supports all broadcast compression codecs and file types mixed in the same playlist
- Automated media transfer and purge with direct playout from central storage for improved media sharing and faster media to air
- Automatic batch file ingest from DVD and SDI sources, including TDIR
- Real-time management of SMS traffic statistics



VECTORBOX Tatamia Control Panel

SYSTEM SPECIFICATIONS

Video I/Os 1 SDI input and 2 outputs

Audio I/Os 8 embedded or 2 pairs AES/EBU per video stream with support for Dolby E

IPTV Os 1 WM9/QuickTime file stream or file series

Compression Support DV25/50, MPEG2 I-frame & IBP, IMX 30/40/50, MPEG4

File Format Support Quicktime from Final Cut Pro, MXF, raw DV and AVI from Avid, Sony and others

Storage Capacity 0.5-2TB RAID 5, upgradeable